

MOD / NATO Disposals

ilitary vehicles and equipment for sale

www.modsurplus.co.uk

Tel: +44 (0)1302-954007

[Return to Homepage](#) | E-Mail: sales@modsurplus.co.uk



REQUEST A QUOTE

or call us on UK +44(0)1302-954007

Description / Ref

MAN LE 10.220 4x4 Crew Cab Truck (Not a Fire Engine) - 50339

Photo (a gallery of photos is provided below - where available)



Details

Direct from the fire service is this very low houred MAN LE 10.220 4x4 Crew Cab Truck 18,300kms

2003 year

This vehicle was built to carry a palletised load secured by twist locks

It is configured with a hose laying / retrieval system and telescopic mast lighting system.

It is also fitted with a side mounted lift for loading and unloading hose

This is an immaculate example and very rare truck which can be easily reconfigured to suit another use.

Videos (if available)

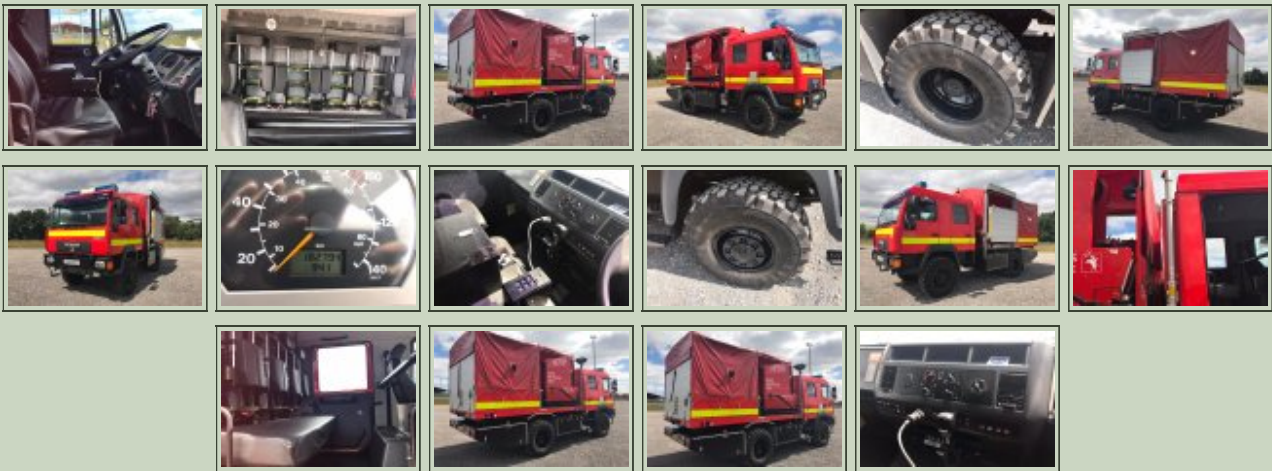
Category	Cargo Trucks	Length	
Manufacturer	MAN	Height	
Engine	MAN 230 HP (169 kW)	Width	
Gearbox		GVW	
Brakes	Air over mechanical	Hrs_Kms	
Steering	RHD PAS	Date into Service	
Tyres		Year of Manufacture	2003
Max Load		Qty Available	1
Electrics	24V	Export Requirements ...more	NLR (No Licence Required)



REQUEST A QUOTE

or call us on UK +44(0)1302-954007

Photo Gallery



■

All prices quoted are GBP U.K. Pounds Sterling Ex. Works excluding VAT where applicable and shipping / associated costs.

■

Vehicles advertised are subject to remaining unsold.

■

All prices quoted are based on **"per individual unit"** purchased, any reductions on advertised price for multiple item orders is subject to negotiation and is conducted at the time of inspection or provision of LOI.

■

Photo's shown above may represent a vehicle type rather than an actual vehicle, vehicles are available serviced and painted to customers preference

■

An export licence may be required for items sold to customers outside of the U.K.
FOR MORE INFORMATION ON EXPORT LICENCING PROCEDURES

[CLICK HERE](#)

FOR INFORMATION ON CURRENT EU EMBARGOES

[CLICK HERE](#)