

MOD / NATO Disposals

ilitary vehicles and equipment for sale

www.modsurplus.co.uk

Tel: +44 (0)1302-954007

[Return to Homepage](#) | E-Mail: sales@modsurplus.co.uk



REQUEST A QUOTE

or call us on UK +44(0)1302-954007

Description / Ref

SDI Aviation Aircraft De-Icing Truck - 40268

Photo (a gallery of photos is provided below - where available)



Details

SDI Aviation Aircraft De-Icer trucks

Just arrived choice of 4 units direct from the Royal Air Force, extremely low use & huge specification

It features;

- **Sterling Acterra base vehicle**
- Mercedes OM 906LA 6400CC turbo diesel engine
- John Deere auxiliary engine
- Stamford Newage 50 KVA 3 phase generator
- Carlin Honeywell 301CRD triple burners
- Triple hose basket 1 fixed with 2 flexible outlets
- Bottom loading facility
- Ground reel
- Condor connections

- 14.68 Metre working height
- Automatic greasing system
- 6000 litre mix tank
- 1400 litre neat tank
- 151 litre per minute delivery speed
- 370 degree non continuous basket rotation
-
- **Vehicle details**
-
- Vehicle 1 Miles- 2551 Engine Hours: 1401 SDI operating Hours: 624
- Vehicle 2 Miles- 1559 Engine Hours: 1346 SDI operating Hours: 528
- Vehicle 3 Miles- 1766 Engine Hours: 2689 SDI operating Hours: 806
- Vehicle 4 Miles- 4122 Engine Hours: 3414 SDI operating Hours: 1237

Videos (if available)

Category	Airfield Support	Length	10.7 M
Manufacturer	SDC	Height	3.7 M
Engine	Mercedes OM906	Width	2.6 M
Gearbox	Automatic	GVW	
Brakes		Hrs_Kms	From 1559 Miles
Steering	LHD	Date into Service	2001-2006
Tyres	425/65R22.5	Year of Manufacture	
Max Load		Qty Available	4
Electrics	12V	Export Requirements ...more	NLR (No Licence Required)

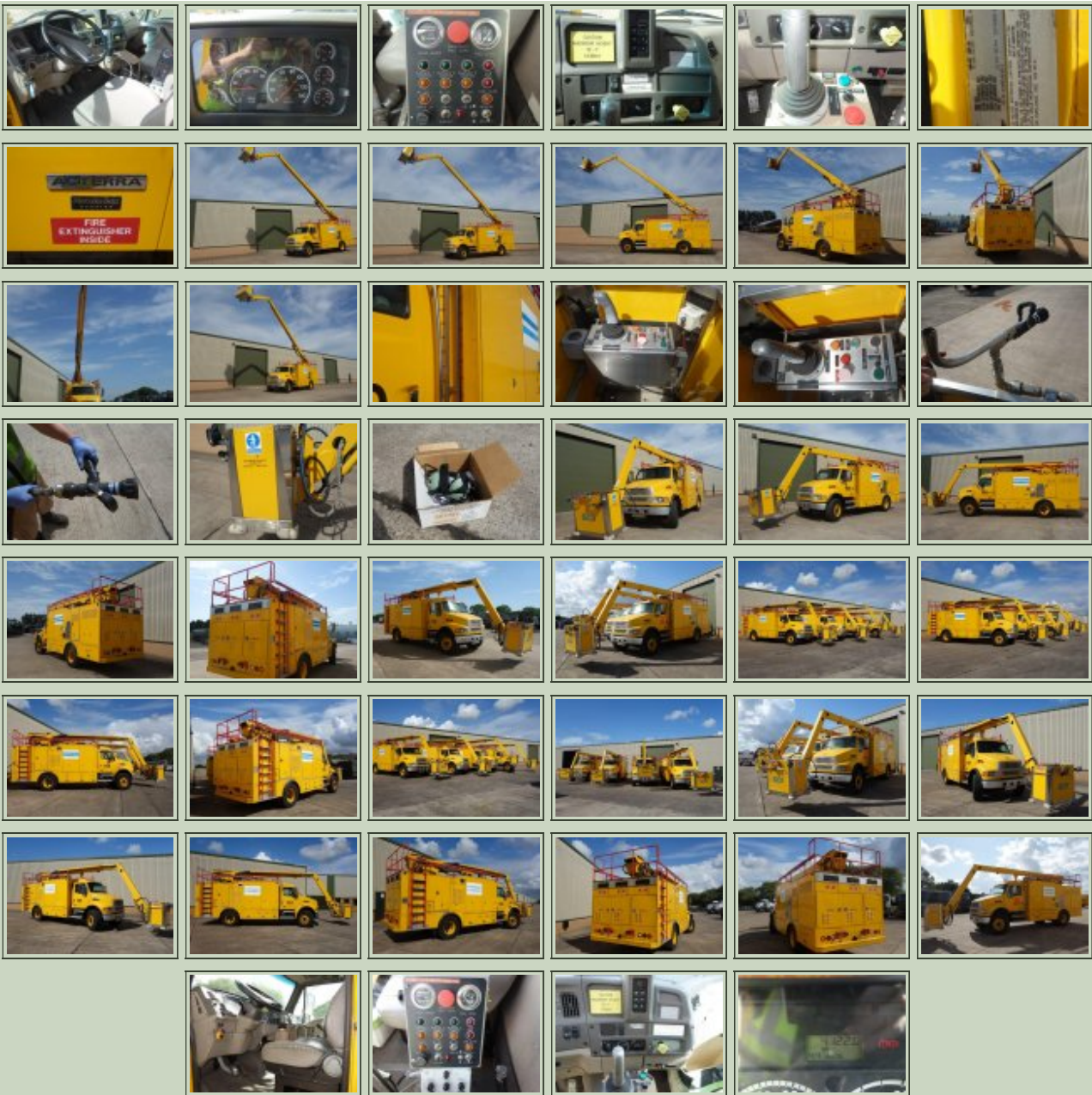


REQUEST A QUOTE

or call us on UK +44(0)1302-954007

Photo Gallery





All prices quoted are GBP U.K. Pounds Sterling Ex. Works excluding VAT where applicable and shipping / associated costs.

Vehicles advertised are subject to remaining unsold.

All prices quoted are based on **"per individual unit"** purchased, any reductions on advertised price for multiple item orders is subject to negotiation and is conducted at the time of inspection or provision of LOI.

Photo's shown above may represent a vehicle type rather than an actual vehicle, vehicles are available serviced and painted to customers preference

An export licence may be required for items sold to customers outside of the U.K.
FOR MORE INFORMATION ON EXPORT LICENCING PROCEDURES

[CLICK HERE](#)

FOR INFORMATION ON CURRENT EU EMBARGOES

[CLICK HERE](#)

